



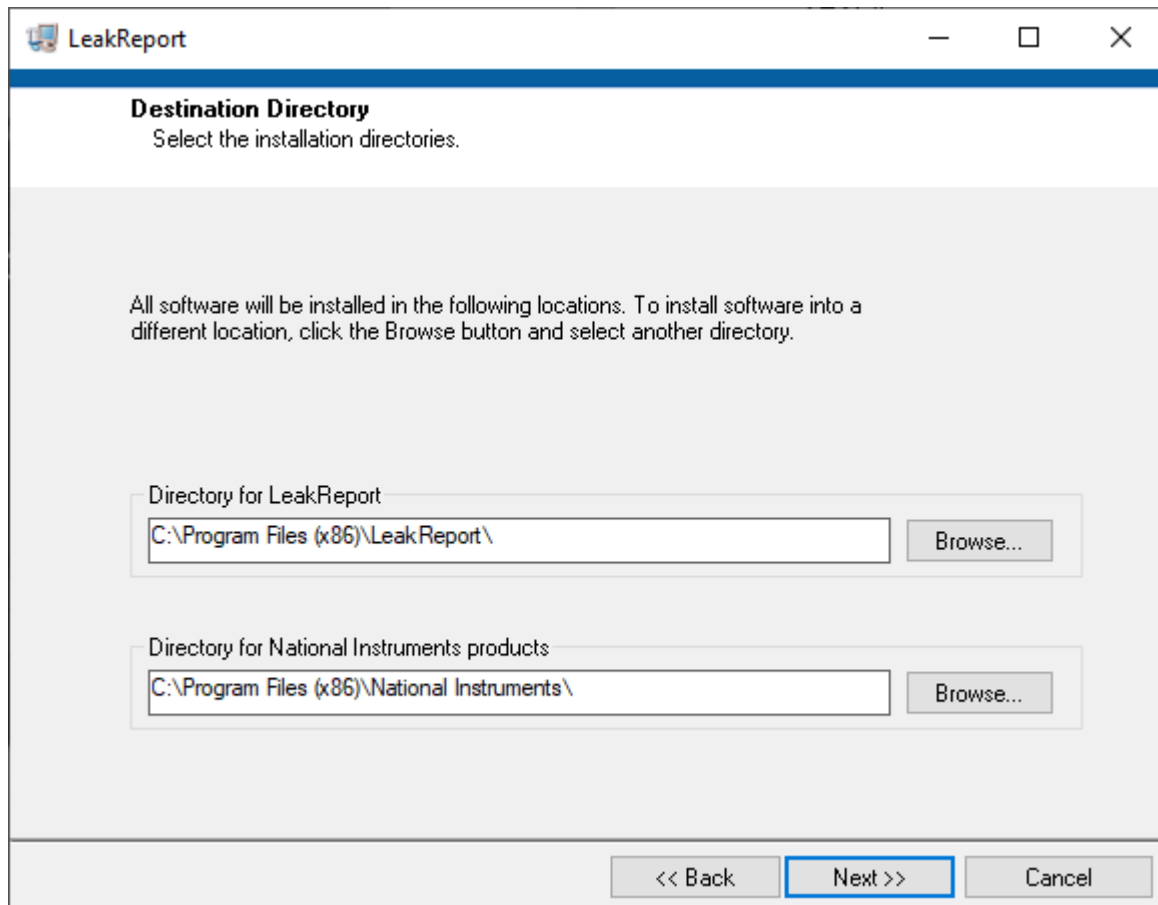
LeakReport Manual



Content

Installation	2
Language and other country-specific settings	3
Generate Report	5
Settings	8
Include your own logos in the report	11

Installation

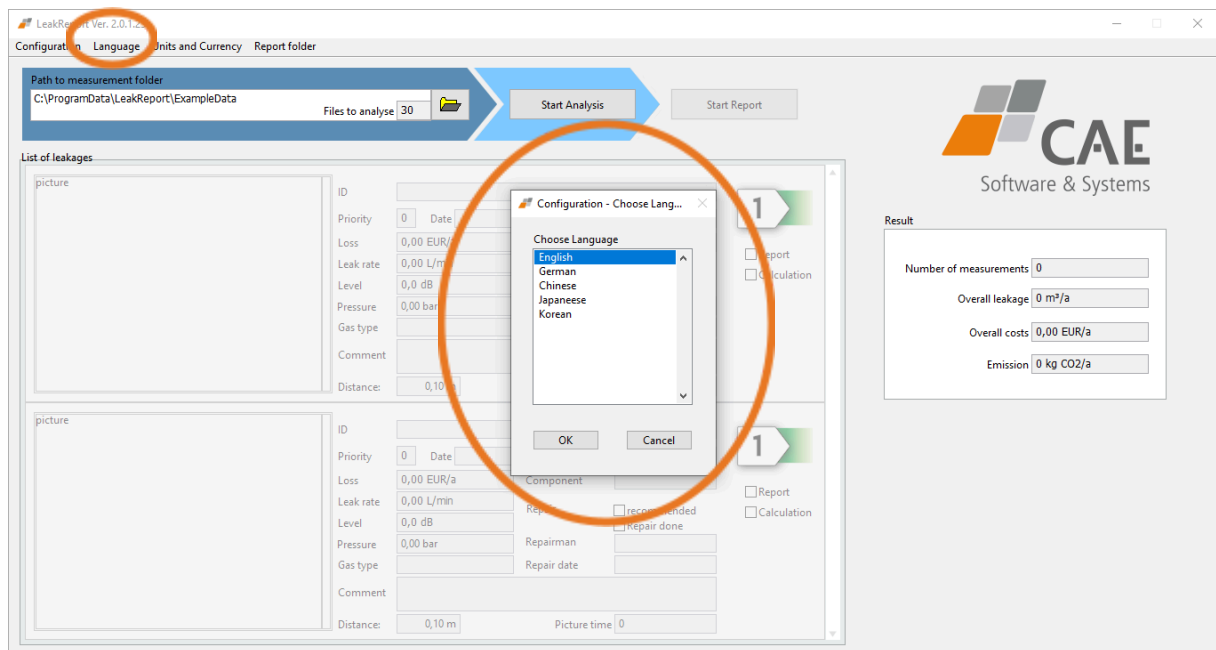


Run setup.exe and follow the installation instructions until the installation is complete.

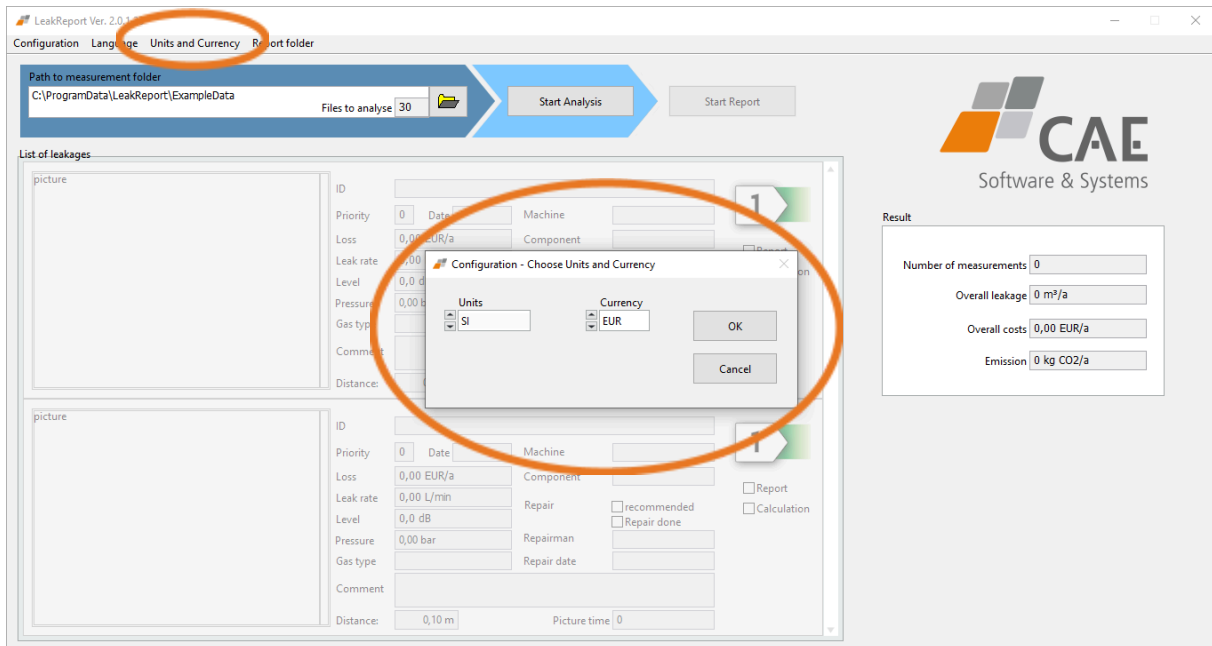
Language and other country-specific settings



Run LeakReport software.



Select "Language" in the menu above to access the language selection menu. Select the language here and confirm with "ok". For English, please select "English". The software automatically remembers the selected language for the next start.



Select "Units and Currency" in the menu above to access the menu. Select the unit system and the currency and confirm with "ok". Please select "SI" for the metric system and "EUR" for the euro.

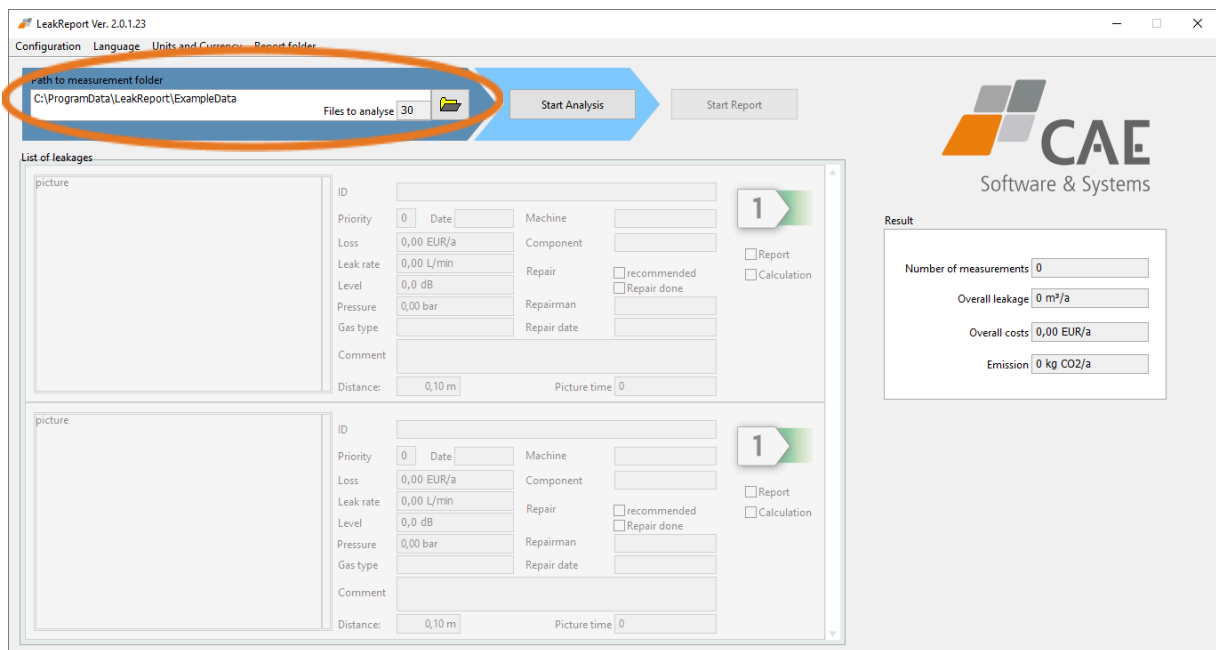
The software automatically remembers the selection for the next start.

If the unit system is changed, it is advisable to reset the settings in the configuration menu. See the chapter Settings.

Generate Report



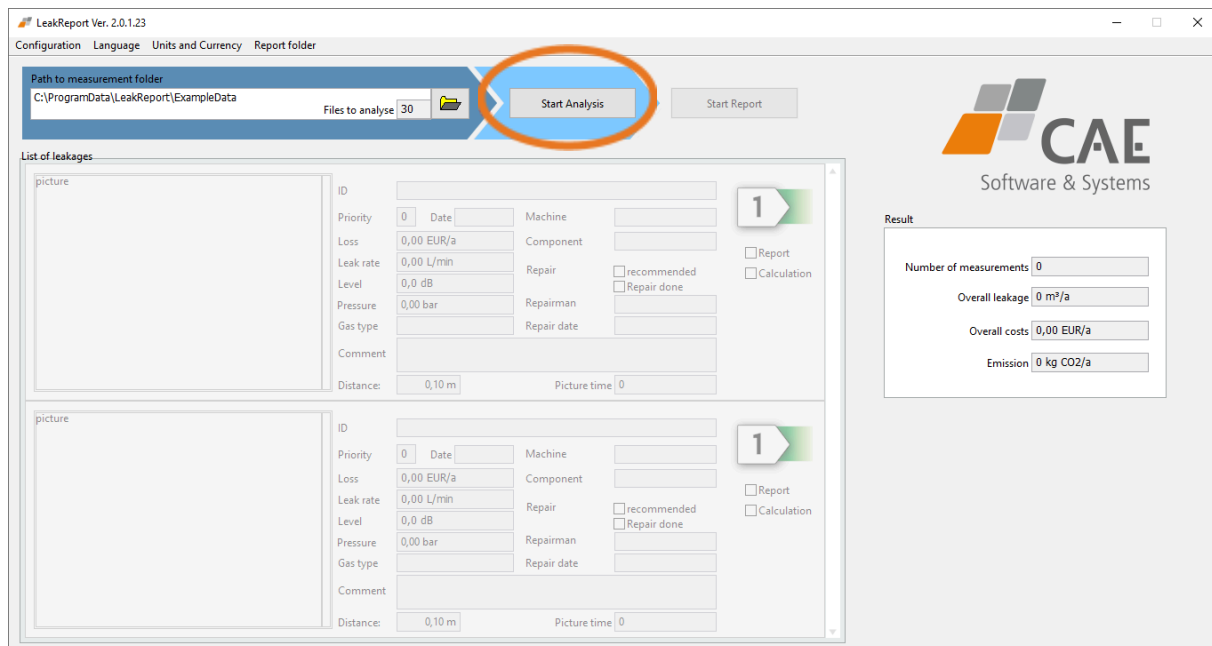
Run LeakReport software.



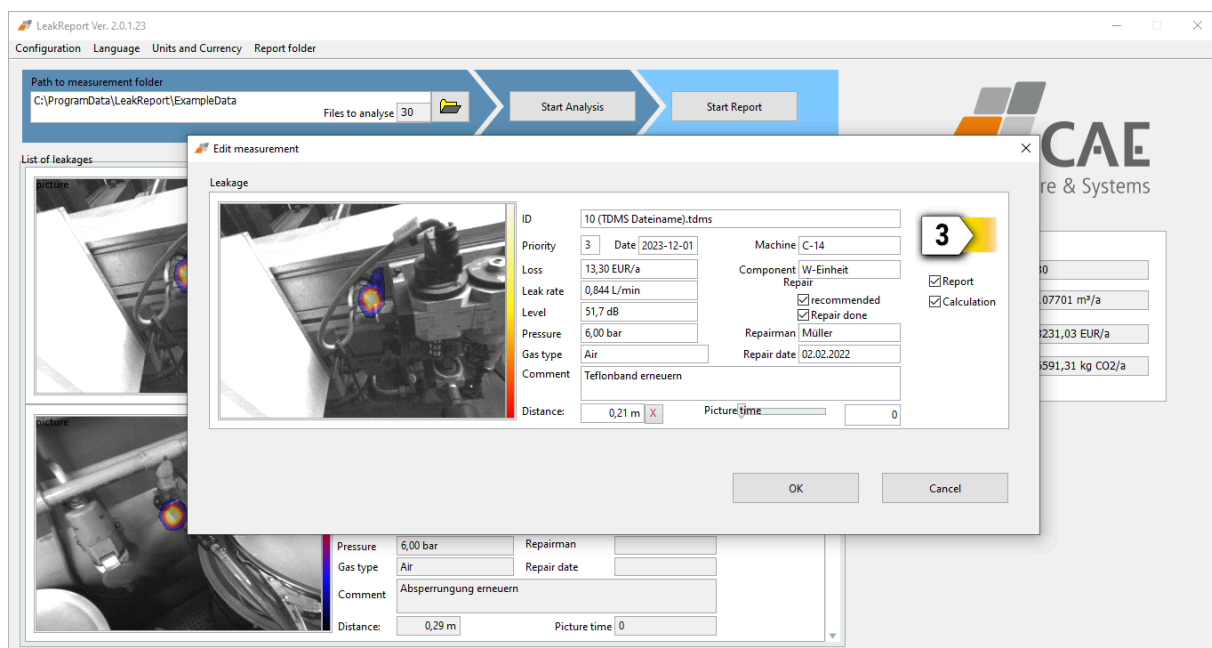
Press the button with the folder symbol at the top to select the folder with the measurement data.

It is recommended to store the measurement data folder under "C:\ProgramData\LeakReport" so that it can be accessed with just a few clicks.

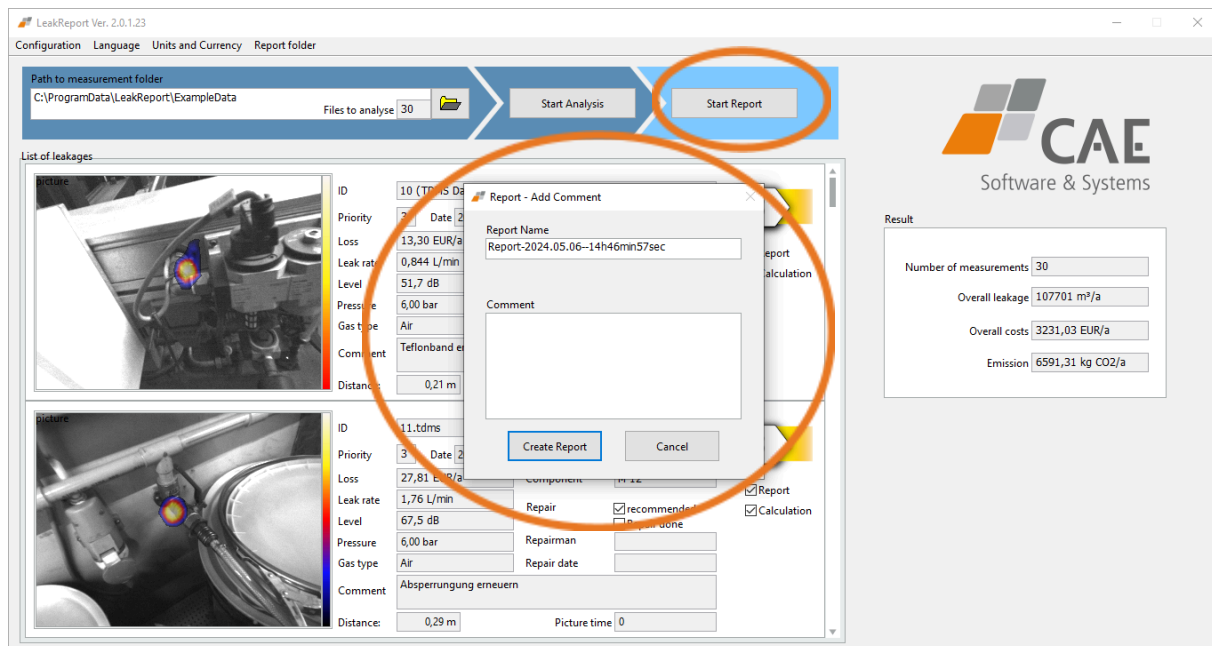
The software is installed with sample data located in the preselected folder under "C:\ProgramData\LeakReport\ExampleData".



The analysis is started with the "Start Analysis" button.

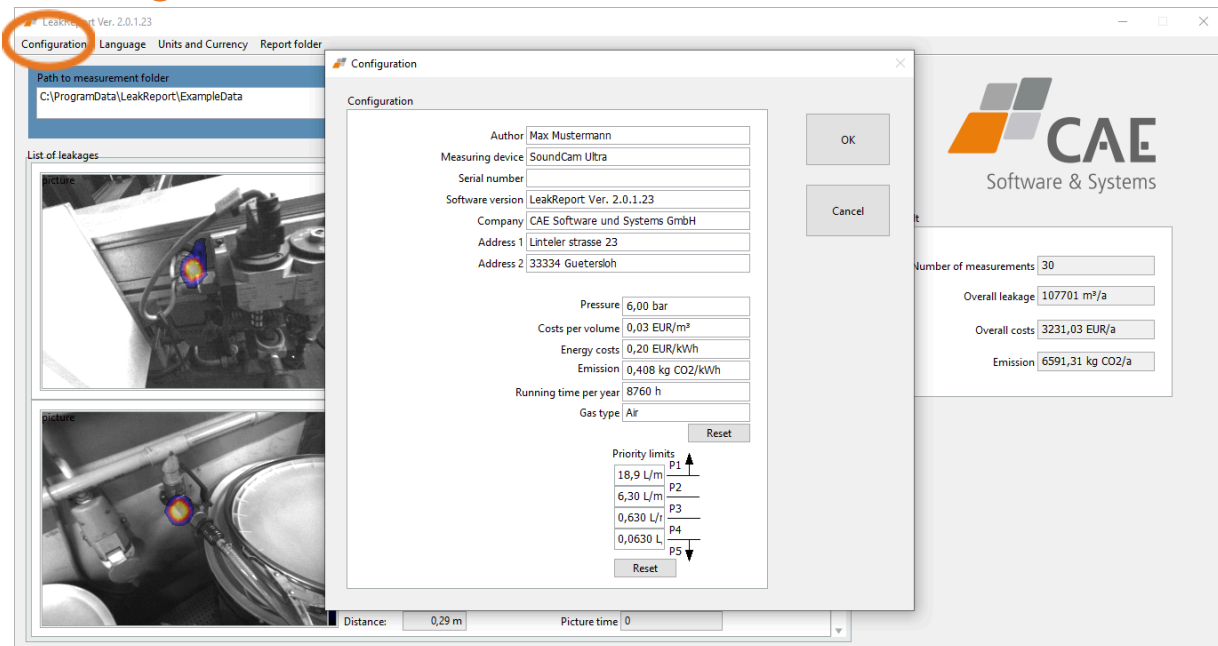


To change (e.g. distance) or add (e.g. comment) details for a measurement, double-click on the measurement.



The export of the report is started with the "Start Report" button. A window then opens in which the name of the report can be customized and an additional comment can be entered. To write the report, click on "Create Report". A PDF file is now created and opened.

Settings



Select "Configuration" in the menu above to edit the analysis settings.

Configuration

Configuration

Author

Max Mustermann

Measuring device

SoundCam Ultra

Serial number

Software version

LeakReport Ver. 2.0.1.23

Company

CAE Software und Systems GmbH

Address 1

Linteler strasse 23

Address 2

33334 Guetersloh

Pressure

6,00 bar

Costs per volume

0,03 EUR/m³

Energy costs

0,20 EUR/kWh

Emission

0,408 kg CO2/kWh

Running time per year

8760 h

Gas type

Air

Reset

Priority limits

18,9 L/m

6,30 L/m

0,630 L/l

0,0630 L

P1

P2

P3

P4

P5

Reset

OK

Cancel

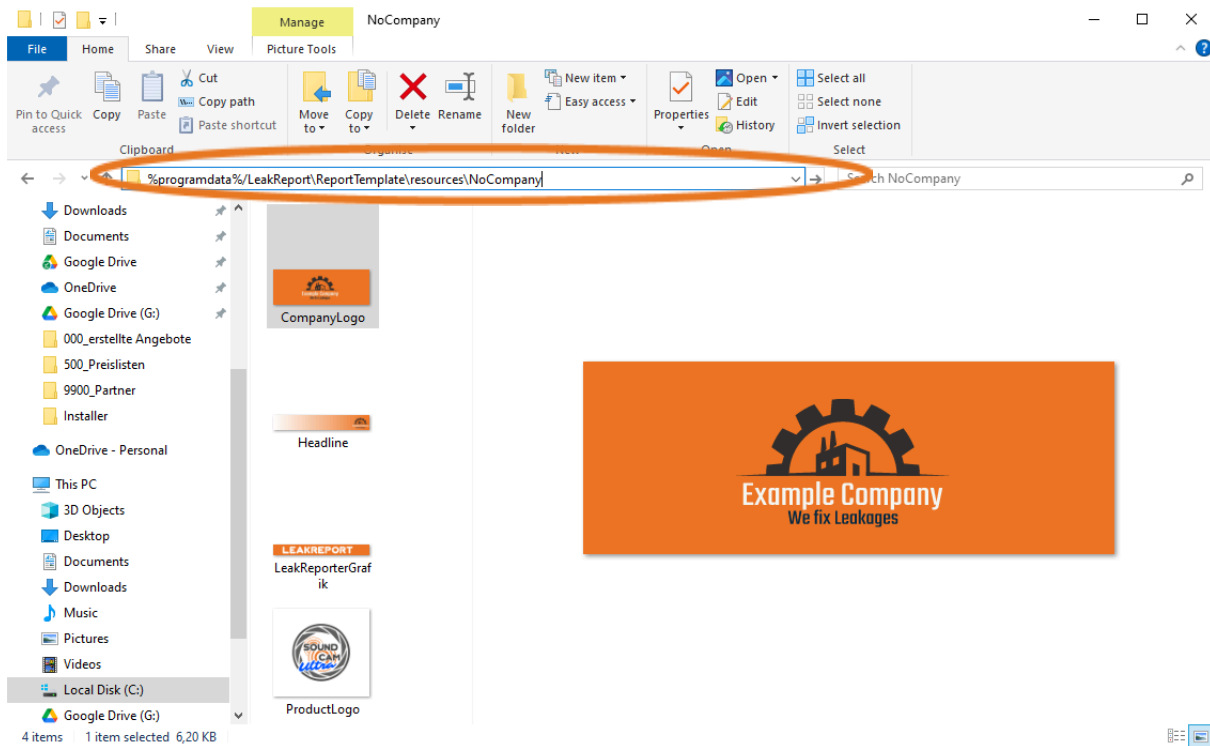
Field	Description
Author	The author of the report can be entered here.
Measuring device	The measuring device used can be entered here.
Serial number	Enter the serial number of the used measuring device here.
Software version	This field is filled automatically and cannot be edited.
Company	A company name can be entered here.
Address 1	An address can be entered here.

Address 2	The address can be added here.
Pressure	ATTENTION! The pressure specified here is for information purposes only and has no influence on the calculation! The pressure information is already contained in the audio signal of the measurement to be evaluated.
Costs per volume	Enter the costs for the specified volume of compressed air/gas here. These depend on the compressor and the electricity costs. For many compressors, this results in a value of approx. 0.03 €/m ³ . This value can be assumed for compressed air if the real value is not known.
Energy costs	Enter the energy costs here. This value is used to calculate the CO ₂ emissions.
Emission	Enter the CO ₂ emissions per kWh here.
Running time per year	<p>Enter the operating hours of the compressors here.</p> <p>The operating hours are needed to extrapolate the leakage costs to the year.</p> <p>Typically:</p> <p>3 shifts (constant operation): 8.760 h</p> <p>2 shifts 7 days: 5.840 h</p> <p>2 shifts 5 days: 4.170 h</p> <p>1 shift 7 days: 2.920 h</p> <p>1 shift 5 days: 2.085 h</p>
Gas type	The medium can be specified here.
Priority limits	The limits can be specified here in order to prioritize the leakages. The

	default settings can be restored via "Reset".
--	---

Include your own logos in the report

You can integrate your own logos in the report.



To do this, use Windows Explorer to navigate to the corresponding LeakReport folder. The following path can be copied into Windows Explorer for this purpose:

%programdata%\LeakReport\ReportTemplate\resources\NoCompany

Here are the 4 graphics that are used for the report. These can be replaced by your graphics.

The file name must be retained, otherwise the graphic cannot be found!

The number of pixels in width and height must be retained, otherwise the report may be displayed incorrectly.

The following image shows what the report looks like with the graphics.

Headline.png
1086 x 172 px



Bericht | 06.05.2024

LEAK **LeakReporterGrafik.png**
1088 x 119 px **ORT**

Report-2024.05.06-13h19min09sec

Erstellt durch

Sam Sample

Messinstrument - Seriennummer

SoundCam Ultra 3 - 230001

Leak Reporter Version

LeakReport Ver. 2.0.1.23

Anzahl der Messungen

30

Zeitraum

2023-06-23 - 2023-12-01

ProductLogo.png
600 x 550 px
ultra

Adresse

Muster GmbH
Muster Strasse 123
012345 Musterhausen

Kommentar

CompanyLogo.png
497 x 180 px
We fix Leakages

The custom logos still need to be activated for the software. To do this, the CAE.ini file in the "StartUp" folder of the LeakReport must be deleted. The following path can be copied into Windows Explorer to navigate to the "StartUp" folder:

%programdata%\LeakReport\StartUp

The CAE.ini file is located in this folder. Please delete it. After restarting the software, your own logos should be used.



Acoem INDIA,
Ground Floor, 1965,
Alembic City, Gorwa,
Vadodara, Gujarat - 390003

Tel.: +91 265 6180 700
info.in@acoem.com
www.acoem.com/india



RODAMIENTOS HURYZA S.L.
C/Veintitrés de abril 19-23 (Pol. El Pilar)
50014 ZARAGOZA
Tel. 976 472 052
www.rodamientos-huryza.com